



Our Production Facilities are HACCP Certified

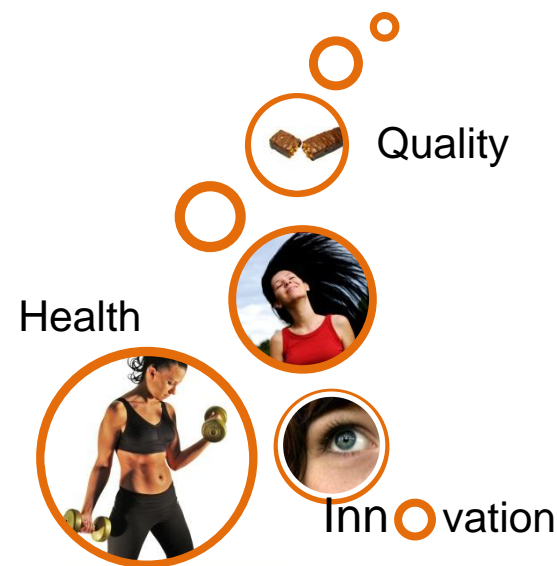
Distribution Made Simple

With distribution in the U.S. and abroad, we get the product to you efficiently without sacrificing quality.

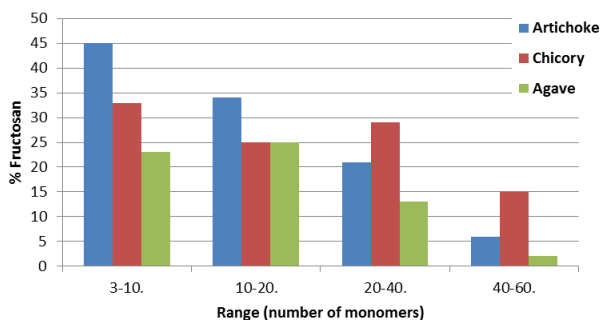


Nutra Food Ingredients

3631 44th Street SE Suite D
 Kentwood, Michigan 49512
 (616)-656-9928
 sales@nutrafoodingredients.com
 www.nutrafoodingredients.com



Comparison of Content and Distribution of Fructosan



Additional Products

- NutraCollagen
- NutraVPro
- NutraPolyols
- NutraGelatin

Inulin Fiber

Agave • Artichoke • Chicory

The Fiber Solution

Nutralnulin™

The Fiber Solution

What is Nutralnulin™?

Nutralnulin is a full lineup of agave, artichoke and chicory based fiber products.

Produced by hot water extraction, ion exchange purification and spray dry processing, it offers the characteristics and functions of soluble fibers.

Applications

- Food and Beverage
 - Diabetic products
 - Yogurt
 - Food bars
 - Juice
 - Smoothies
 - Beverages
- Nutraceutical
 - Weight management
 - GI health



Fast Facts

• Product Certifications

- USDA Organic Certified
- Non-GMO
- Kosher & Halal
- GRAS



• Functionality

- Prebiotic digestive health
- Source of dietary fiber
- Low glycemic index
- Low calorie content
- Enhanced calcium absorption

Nutralnulin™ Product

• Agave Sweet: Syrup and Powder

- 10-15% fiber content
- Sugar and sugar syrup replacer
- 25-30% sweeter than sugar
- Low glycemic index (GI=27.5)
- Adds texture to products
- Replaces fat and flour

• Inulin Powder

- Highly soluble
- High fiber content >90%
- Available in medium and long chain fructans

• Inulin Liquid

- 70% solid solids

• FOS

- Derived from inulin
- Both in liquid and powder
- Shorter fructan chain than inulin

Typical Specifications

| Item | Inulin | FOS |
|------------------------------|-------------------|-------------------|
| Dry Matter | ≥96.5% | ≥96.5% |
| Carbohydrates (minimum %) | ≥98% | ≥99% |
| Inulin (minimum %) | ≥90% | ≥90% |
| Sucrose + Glucose + Fructose | <8.0% | 2% |
| Average DP | 9-11 | 6-8 |
| Moisture | 3.5% | 4% |
| Insoluble Ash | 0.1% | 0.1% |
| pH value (10% Brix) | 6-7 | 6-7 |
| Density | 500±50g/L | 500±50g/L |
| Dispersibility in Water | Excellent | Excellent |
| Appearance | White powder | White powder |
| TBC | ≤1000cfu/g(total) | ≤1000cfu/g(total) |



Quality Assured Products

100% guaranteed satisfaction